



AccuFlo VTO is a proven orifice design.

AccuFlo VTL is a high accuracy Laminar flow element with high turndown ratio up to 1:50.



AccuFlo VTR is an industry standard rotameter design with high accuracy magnetostrictive flow sensor.

The **AccuFlo Valve-Tronic** series is designed for use in highly demanding industrial applications that require accurate flow control and measurement. It can function as a stand-alone controller for basic applications or become an integral part of a process control system for automatic flow control. Temperature / Pressure compensation for real-time flow correction is standard with the AccuFlo Valve-Tronic. This ensures the most accurate flow measurement possible.

## FEATURES & BENEFITS

- Large LCD display provides vital information such as actual flow rate, totalized flow, valve position, alarms, and diagnostic messages
- Field Verification/calibration possible
- Simple and intuitive programming menus
- Field programmable engineering units
- Configurable to control based on rate of flow or valve position for applications where the Process Variable (PV) is Dew-point, Carbon Potential, etc.
- Standard Modbus TCP for easy integration with control systems
- Temperature / Pressure compensation for added accuracy
- Manual actuation of valve possible
- Easy to install
- Ideal for customers who need to control and data log flow rates for compliance to NADCAP, AMS2750D, or CQI 9
- Advanced polynomial calibration for high accuracy over the entire range of the meter
- Built-in Web Server with remote access to device
- Full PID setpoint control
- Configurable flow alarms
- Calibration in state-of-art ISO/IEC 17025:2005 accredited laboratory



LCD display provides easy-to-read indication of operation values, parameters and faults.

## APPLICATIONS

- Annealing
- Carburizing
- Gas Blending
- Neutral Hardening
- Nitriding
- Sintering

## COMPATIBILITY

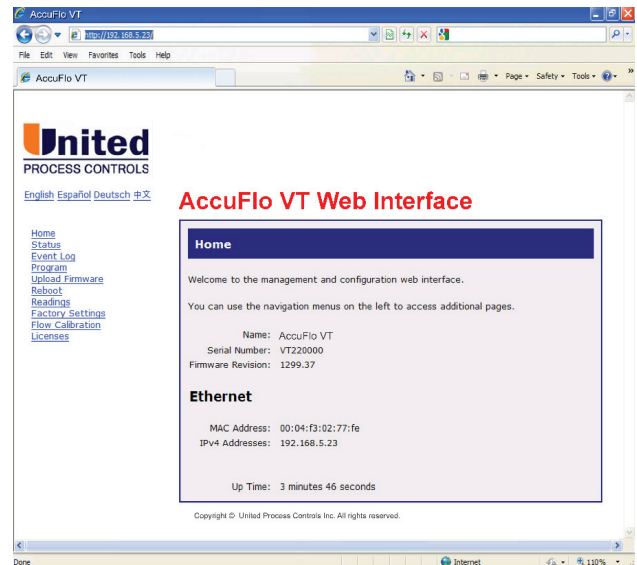
- All gas types and mixtures
- Liquids including water, alcohol, and methanol

*If you are unsure of the gas or liquid compatibility of your application, please contact your UPC representative.*

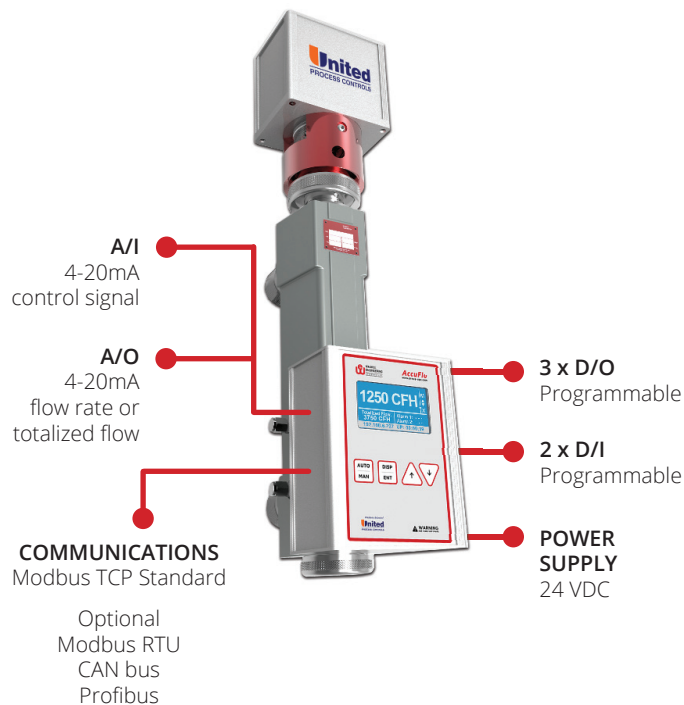


## WEB SERVER FEATURES

- Remote access to the device via web browser, no special software required
- Intuitive web interface
- Several access levels with passwords
- Access up-to-the-minute information on the current flow, totalized flow, PID feedback, valve position, current mode, errors, and much more
- Easy setup of parameters
- Built-in event log viewer for troubleshooting
- Logs export to CSV format
- Save, upload, back up and restore configuration files
- Option to upload configuration files to multiple controllers



## CONTROL DIAGRAM



## SPECIFICATIONS

**Power requirements:** 24VDC +/- 5 %, 1.0 Amps max.; regulated

**Inputs:** 1 analog, 2 digital

**Outputs:** 1 x analog, sourcing 4 – 20 mA (R<500 Ohm)  
3 x digital, 0.5 Amp @ 24 VDC

**Setpoint Input Signal:** Isolated 4-20mA

**Flow/Totalized Output Signal:** Isolated 4-20mA

**Ambient Temperature (ambient):** 0°C to 65°C (32°F to 140°F)

**Ambient Temperature (storage):** -20°C to 80°C (-4°F to 176°F)

**Relative Humidity:** 20% to 95% (non-condensing)

**Altitude:** Up to 2000 m (6561 ft.) above the sea level

**Scale:**  
Model S: 4-400 CFH (0.1-3 m<sup>3</sup>/hr)  
Model M: 10-1500 CFH (0.3-42 m<sup>3</sup>/hr)  
Model L: 150-18,000 CFH (4-510 m<sup>3</sup>/hr)

**Turndown Ratio:**  
VT Orifice: 10:1  
VT Laminar: 25:1  
VT Rotameter: 12:1

**Accuracy:**  
VT Orifice: 4.0%  
VT Laminar: 2.0%  
VT Rotameter: 4.0%

**Max Operating Pressure:** 30 PSIG (2 barg)

**Pressure Drop:**  
VT Orifice : 10" W.C. (25 mbar)  
VT Laminar : 10" W.C. (25 mbar)  
VT Rotameter : 2" W.C. (5 mbar)

**Recommended Diff. Pressure:**  
VT Orifice: >1 PSI (28" W.C.)  
VT Laminar: >1 PSI (28" W.C.)  
VT Orifice: >0.5 PSI (14" W.C.)

CHINA +86 10 8217 6437 | FRANCE +33 3 8148 3737 | GERMANY +49 7161 94888 0 | POLAND +48 32 296 66 00 | USA +1 513 772 1000